

# Meeting Format Discussion

- In-Person Option: PaTTAN
  - **Accommodations:** Rooms suitable for 20-400 attendees
  - **A/V Capabilities:** Built-in computers equipped with ClickShare, OneDrive, and Teams
  - **Accessibility:** microphones/speakers, first-floor conference rooms, automatic doors
  - **Amenities:** Catering partners available for easy set-up

## In-Person, Hybrid, or Virtual?



# PENNSYLVANIA

## Aging Our Way, PA

A 10-year strategic plan designed to help transform the infrastructure and coordination of services for Pennsylvania's older adults.

# *Aging Our Way, PA* is:

- **Stakeholder-Driven:** PDA invited stakeholders across the state – including Pennsylvanians over 60, caregivers, families, and community members - to reflect on and recommend improvements to the services and infrastructure in their communities.
- **Collaborative:** Last May, Executive Order 2023-09 directed PDA to lead the development of a 10-year strategic plan that will prepare all agencies within the Commonwealth to work together to support our growing and diverse population of older adults.
- **Achievable:** To guarantee achievability, each policy initiative in *Aging our Way, PA* has been refined in active partnership with the agencies responsible for its implementation.
- **Responsive:** The Plan is designed to adapt alongside shifting needs and resources over its 10-year timeframe.
- **Necessary:** Older Pennsylvanians are grateful for the services and infrastructure they rely on, but these support structures already strain to meet their needs. The investments and improvements outlined in *Aging our Way, PA* are needed for Pennsylvania to grow alongside its aging population.
- **Efficient:** The priorities, strategies, and tactics in *Aging our Way, PA* present an opportunity for Pennsylvania’s government to work smarter: to streamline inter-agency cooperation, strategically invest in our infrastructure, and efficiently allocate our resources to serve all Pennsylvanians more effectively while saving money in the long run.

# Development Phase I: Stakeholder Engagement

## Direct Engagement (Qualitative)

- Partnership with Area Agencies on Aging
- **210** listening sessions (at least 1 per county), plus over **3,300** comments

**Over  
10,000**  
counts of  
engagement

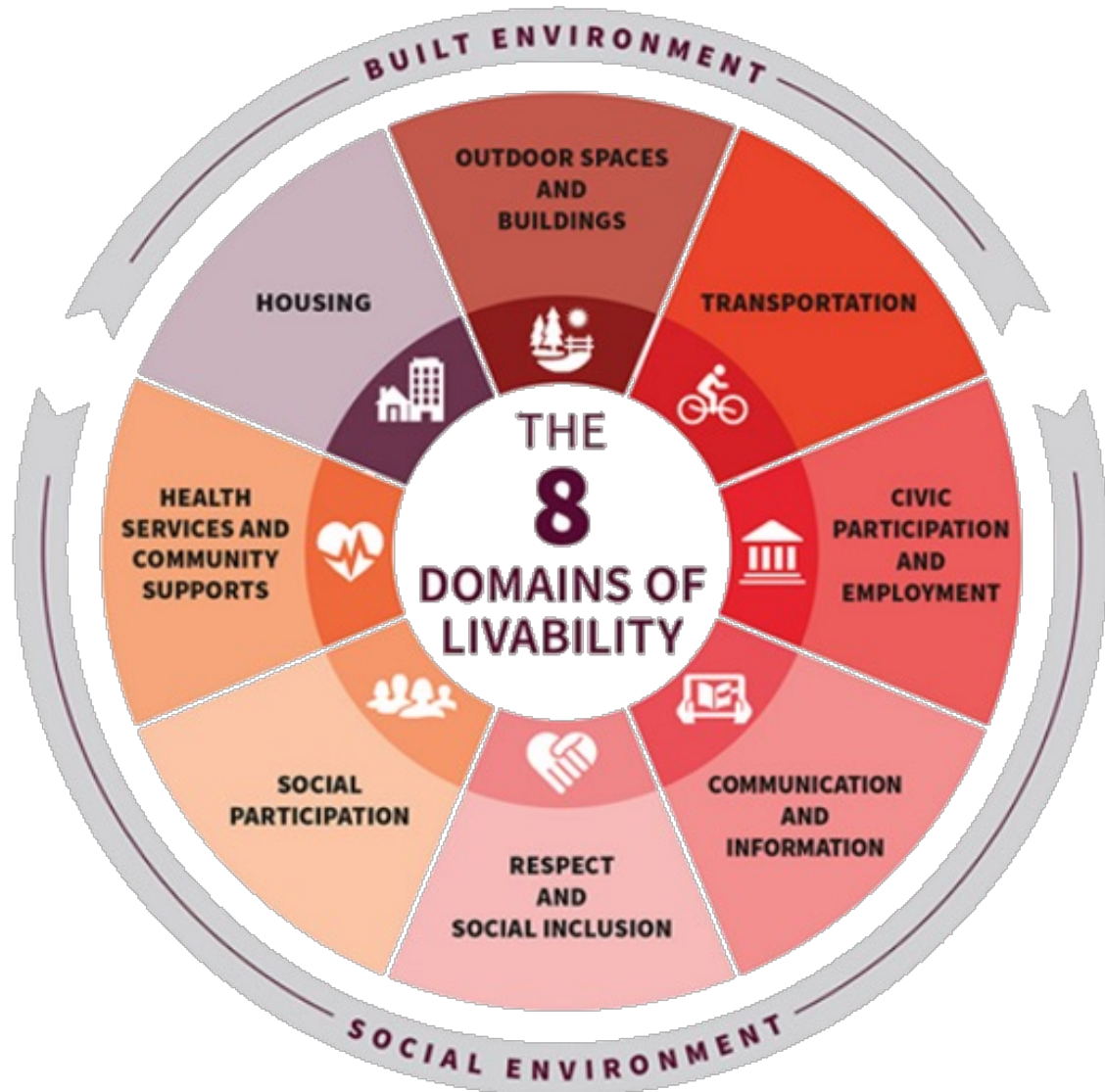
## Needs Assessment Survey (Quantitative)

- Partnership with University of Pittsburgh School of Public Health
- Survey of **900** older adults, plus nearly **7,000** online form responses

**Nearly  
8,000** counts  
of engagement



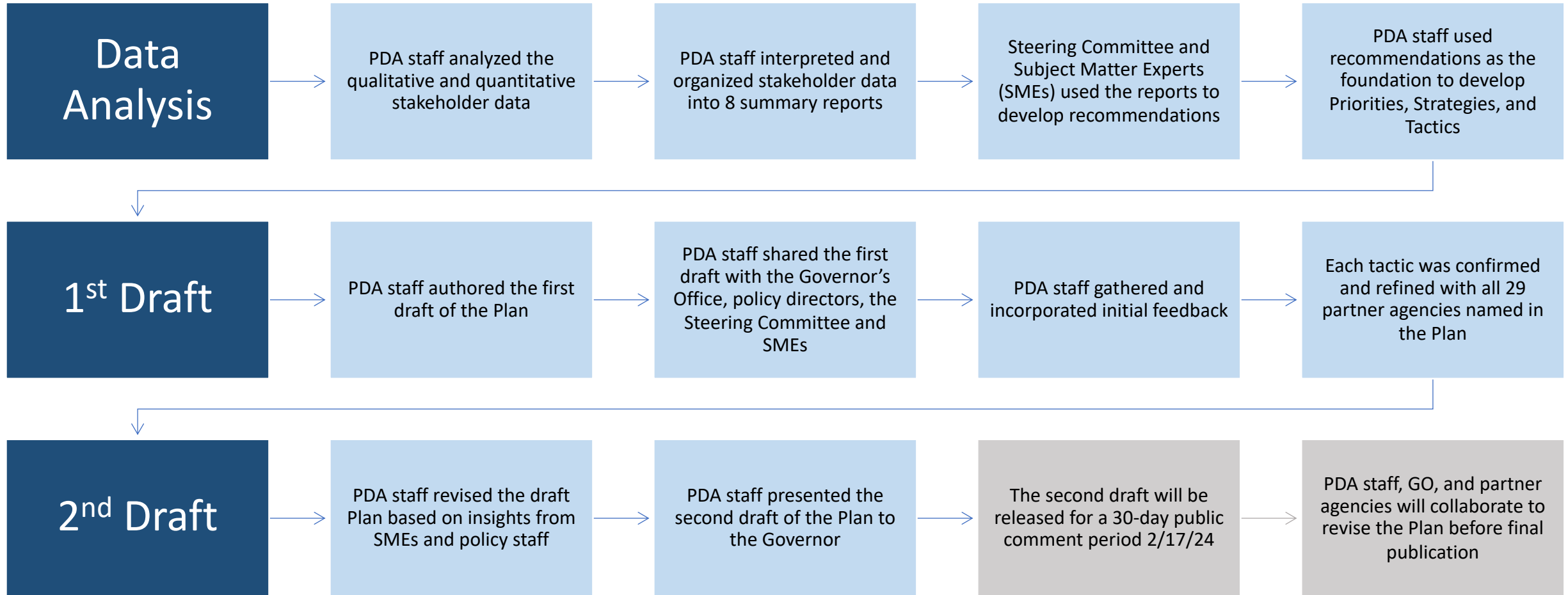
## Development Phase I: Stakeholder Engagement Cont.



## Data Collection Framework: AARP's 8 Domains of Livability

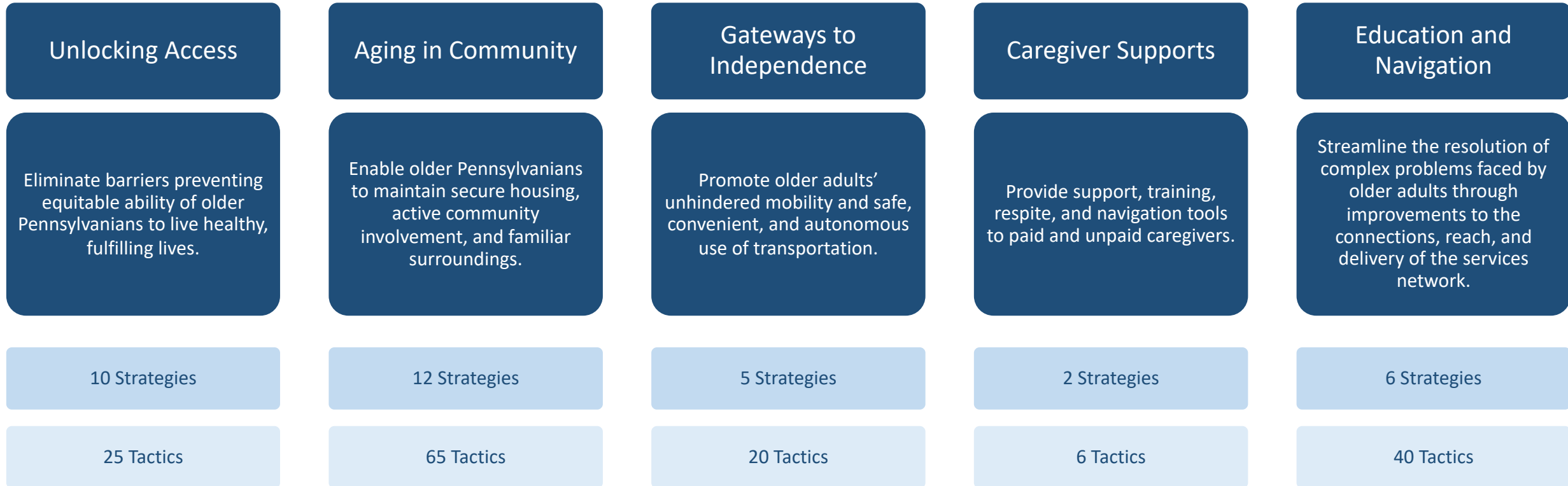
- **Person-centered:** creates snapshot of a person's lived experience
- **Community-focused:** emphasizes relationship between community and quality of life
- **Evidence-based:** regarded as "Gold Standard" for age-friendly community development

# Development Phase II: Crafting Policy Initiatives



# Plan Structure: Priorities, Strategies, and Tactics

*Aging Our Way, PA* is structured around **priorities** (high-level themes), **strategies** (mid-level approaches), and **tactics** (specific, measurable initiatives).



# Plan Impact Year 1: Expanding and Improving Existing Programs and Resources

In its first year, Aging Our Way, PA will immediately support the needs of older adults by improving successful and scalable programs while laying the groundwork for more ambitious long-term projects.

- *Caregiver Supports*: Develop a statewide Caregiver Toolkit.
- *Unlocking Access*: Highlight age-friendly job postings on PA CareerLink.
- *Education and Navigation*: Research how to reframe Senior Community Centers and congregate meals to better promote membership and participation.
- *Gateways to Independence*: Increase awareness of existing safe driving education programs.



# Plan Impact Year 5: Redesigning Infrastructure Across Sectors

By year 5, *Aging Our Way, PA* will build on research and program evaluation to develop new programs that address gaps in services and infrastructure supporting older adults.

- *Gateways to Independence*: Develop toolkits for county and municipal governments to increase public transit services and address gaps.
- *Education and Navigation*: Address the needs of older adults in public emergency situations, especially those who live in nursing homes, are homebound, or belong to historically marginalized communities.
- *Caregiver Supports*: Implement recommendations from the Blueprint for Strengthening Pennsylvania's Direct Care Workforce by improving the pay, training, career development, and employment experience of these critical long-term care professionals.

# Plan Impact Year 10: Reimagining and Building System of Supports

Through *Aging Our Way, PA*, the service delivery and advocacy networks transformed over the previous decade will deliver reimagined systems of supports that elevate the aging experience to be the best phase of a person's life.

- *Caregiver Supports*: Change Scope of Practice laws to allow healthcare paraprofessionals and other individuals to perform healthcare functions they are qualified to perform.
- *Aging in Community*: Create and fund community planning and action grants to coordinate funding and resources for sidewalk repairs, transit stops, parking enhancements, and lighting installation.
- *Education and Navigation*: Repurpose under-utilized public university spaces to create accessible housing for older adults.

# Aging Our Way, PA Key Outcome: Spending Diversion

- The affordability of long-term services and supports (LTSS) was frequently raised by community members and their caregivers.

## Average Annual Cost of Long-term Care in Pennsylvania (2021)

In-Home Care	Community and Assisted Living	Nursing Facility Care
<ul style="list-style-type: none"> <li>• \$59,488 (Personal Care and Home Health Aid)</li> </ul>	<ul style="list-style-type: none"> <li>• \$19,500 (Adult Day)</li> <li>• \$49,200 (Assisted Living Residence)</li> </ul>	<ul style="list-style-type: none"> <li>• \$124,841 (Semi-Private Room)</li> <li>• \$133,882 (Private Room)</li> </ul>

- Many individuals identified as “near poor” – those who hover above financial eligibility for public assistance programs but whose resources do not adequately meet their needs.
- These individuals cannot sustain the out-of-pocket costs for LTSS and will become eligible for Medicaid access.
- **If the estimated 112,000 “near poor” older Pennsylvanians were to spend down into Medicaid LTSS, the price tag could range from \$6-14 billion.**

# *Aging our Way, PA* Key Outcome: Spending Diversion Cont.

- Preventative services and supportive infrastructure identified by *Aging Our Way, PA*, including home- and community-based programs, have long-term financial benefits by preventing institutionalization, Medicaid spend-down, and utilization of more costly health services.
- Many of these tactics are investments in existing programs that have a strong return on investment and outsized impact on the older adult and caregiver population, especially the “near poor” demographic often falls through the cracks of traditional assistance programs.
- By investing in this demographic, we're enabling them to remain active contributors to society as workers, volunteers, taxpayers, active and independent community members, and voters.
- Proactive planning and strategic investment to build better community-based and statewide infrastructures that support these programs will yield substantial financial returns, improved outcomes, and reduced costs over the next ten years.

# High Impact Tactics

High Impact tactics are those that yield cost savings/cost avoidance by:

- **Reducing or delaying need for public assistance programs:** Older adults increase or retain financial resources that delay or reduce their need for public assistance programs through improved access to employment opportunities, affordable transportation, and exploitation prevention.
- **Benefit to physical and/or behavioral health:** Older adults improve their health and wellness through nutritious meals, social participation, disease prevention programming, and other resources, become less likely to utilize costly services, and reduce overall healthcare spending.
- **Reducing or delaying need for nursing facility services:** Older adults receive services in home- and community-based settings that are consistent with their preference to age in community and less costly than those provided in institutional settings.
- **Reducing recidivism:** Older adult reentrants receive support that prevents recidivism and avoids the costs associated with reincarceration.



# LTCC Concern: *Aging our Way, PA* Personas

We appreciate the feedback we have received from the LTCC regarding the *Aging our Way, PA* second draft. Some LTCC members have voiced concerns regarding the content or inclusion of "personas" as a component of the Plan: composite characters intended to illustrate the impact of the plan and the issues that an age-friendly Pennsylvania can address.

These characters are neither real people, nor are they intended to be stereotypes. Rather, they capture individual experiences and perspectives that have been gathered directly from older adults, caregivers, people with disabilities, or other stakeholders. This approach was designed to ensure that the characters are not only respectful and accurate, but also deeply rooted in authenticity.

That said, we understand based on feedback that these personas may not resonate as we intended, and that they may need to be refined or removed from the Plan.

**Before we open the floor for general comments, questions, and feedback regarding the second draft, we feel it is appropriate to invite the LTCC to make a determination regarding the personas, both in content and as narrative devices.**

# Questions, Comments, and Feedback